

# CERTIFICATE OF LOCATION OF GOVERNMENT CORNER

County of Anoka

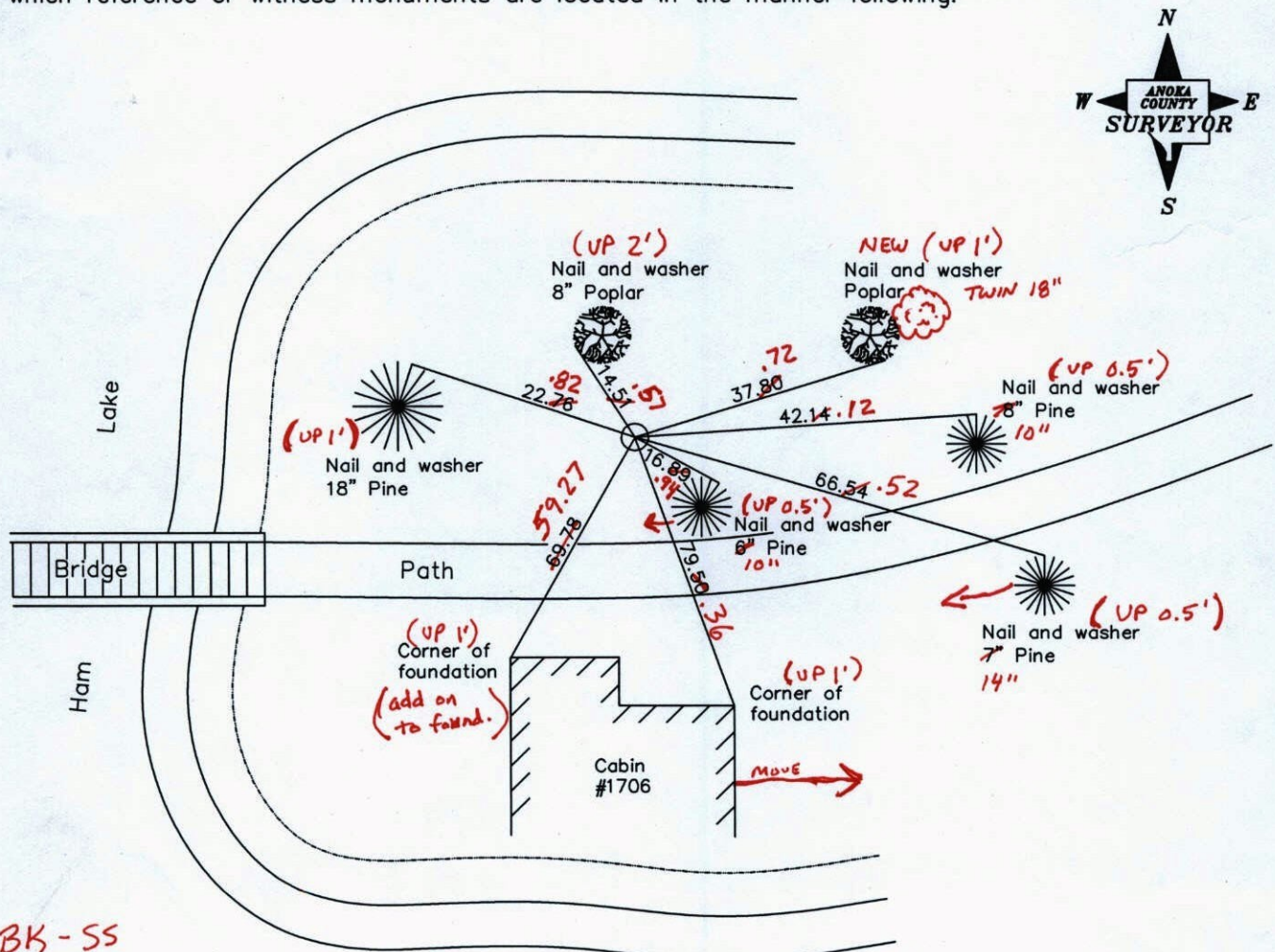
State of Minnesota

Meander Corner of Sec. 20 Township 32 Range 23  
(on north line of NE1/4)

I hereby certify that on the 25th day of September, 1961, I found the described corner which was evidenced by a sandstone monument

and I further certify that to perpetuate the location of said corner, I did, at the exact location thereof, place a permanent marker consisting of an iron pipe with a bronze cap ✓

which reference or witness monuments are located in the manner following:



BK-SS  
T/T

Revised date

8/05/96
2/05/02
4-29-11

N.A.D. 1983 Coordinates  
(1996 adjustment)

County Project Coordinates	State Plane Coordinates
Northing <u>180249.1391</u>	Y _____
Easting <u>510256.7827</u>	X _____

Date 2/05/02



# CERTIFICATE OF LOCATION OF GOVERNMENT CORNER

County of Anoka

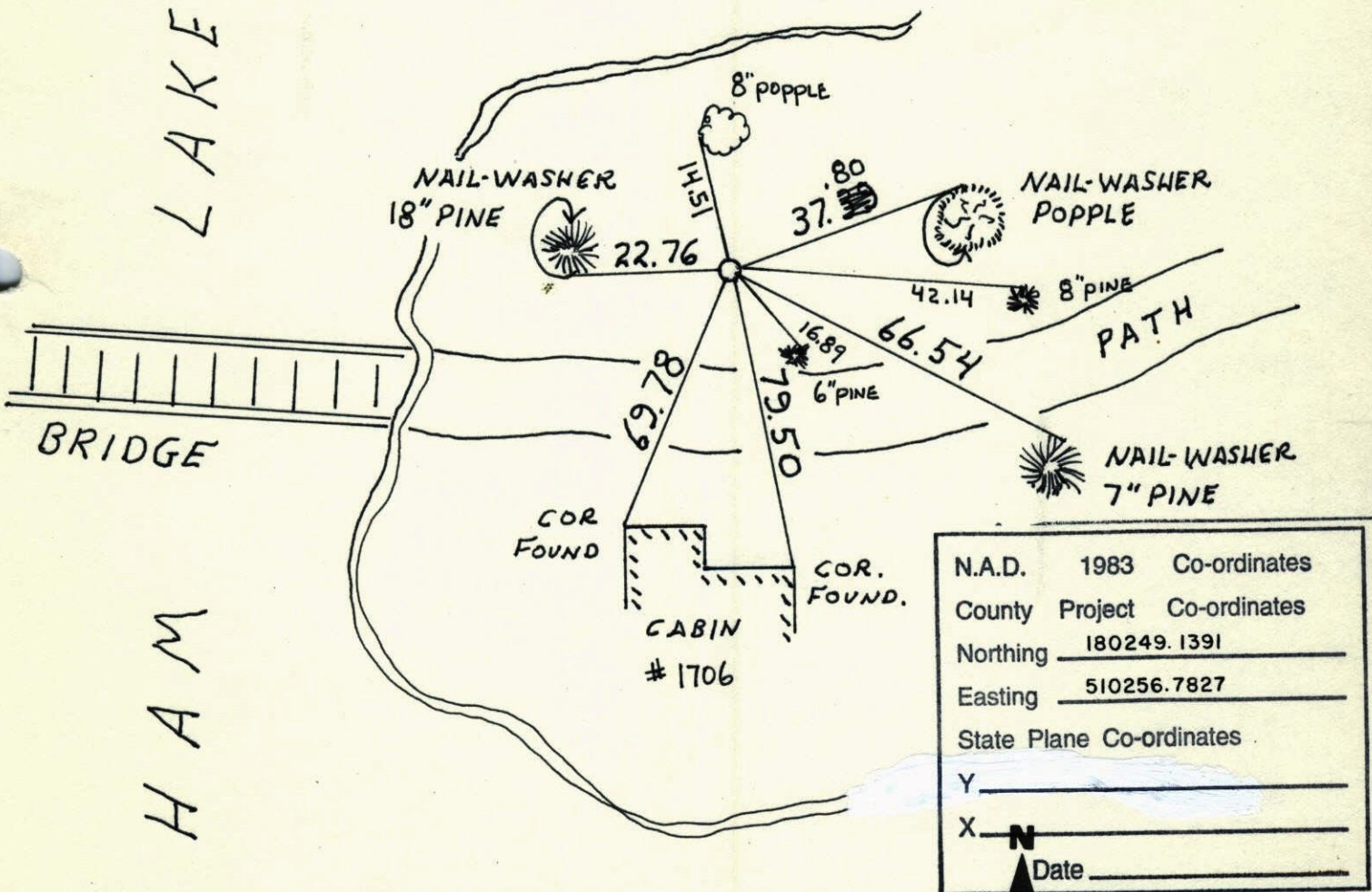
State of Minnesota

MC ON N. LINE Corner of Sec. 20 Township 32 Range 23  
 OF NE 1/4

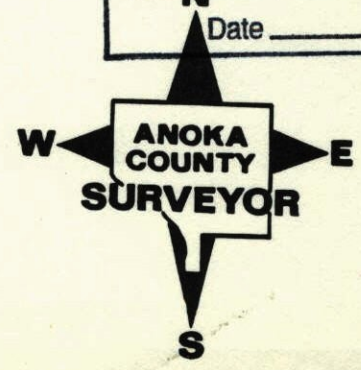
I hereby certify that on the 25 day of SEPT, 19 61, I found the described corner which was evidenced by SANDSTONE MONUMENT

and I further certify that to perpetuate the location of said corner, I did, at the exact location thereof, place a permanent marker consisting of IRON PIPE WITH BRONZE CAP

which reference or witness monuments are located in the manner following:



N.A.D.	1983	Co-ordinates
County	Project	Co-ordinates
Northing		<u>180249.1391</u>
Easting		<u>510256.7827</u>
State Plane Co-ordinates		
Y	_____	
X	_____	
Date	_____	

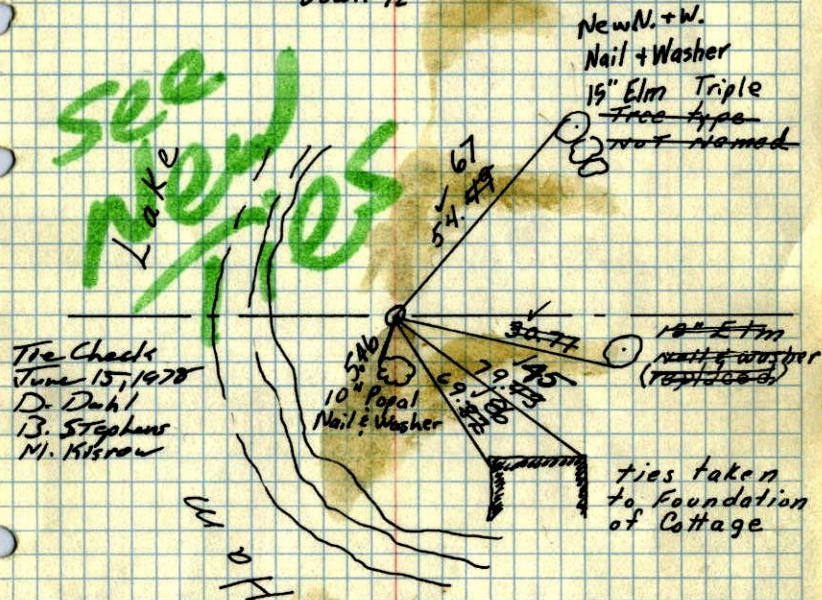


Revised date	Revised date	Revised date
6-26-87		
6-17-92		
6-29-94 WL		
8-5-96		
2-5-02		



M.C. on West End of Island on  
Ham Lake T32-R23

Iron pipe with Bronze Cap  
(U.S. Land Office, Dept. of Interior)  
Down 1/2"



Tie Check  
Aug. 11, 1966  
H. Larson  
D. Potter  
G. Reimer

Tie Check  
June 18, 1975  
D. Dahl  
B. Sannerud G. Adams

1961

Freeman  
Anderson

Retie 7/13/64  
M. D. Anderson  
R. Carlson

TEMPERATURE CORRECTED ROLAND W. ANDERSON  
AND HORIZONTALLY COUNTY SURVEYOR  
TAPED MEASUREMENTS ANOKA COUNTY, MINNESOTA

M.C. on West end of Island (Ham Lake)

SECTION 20

Iron pipe with bronze cap  
(U.S. Land Office, Dept. of Interior)  
Down 1/2"

